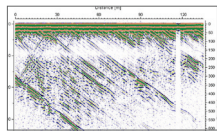
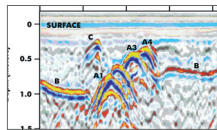


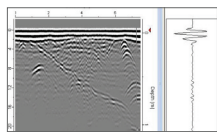
1. File management



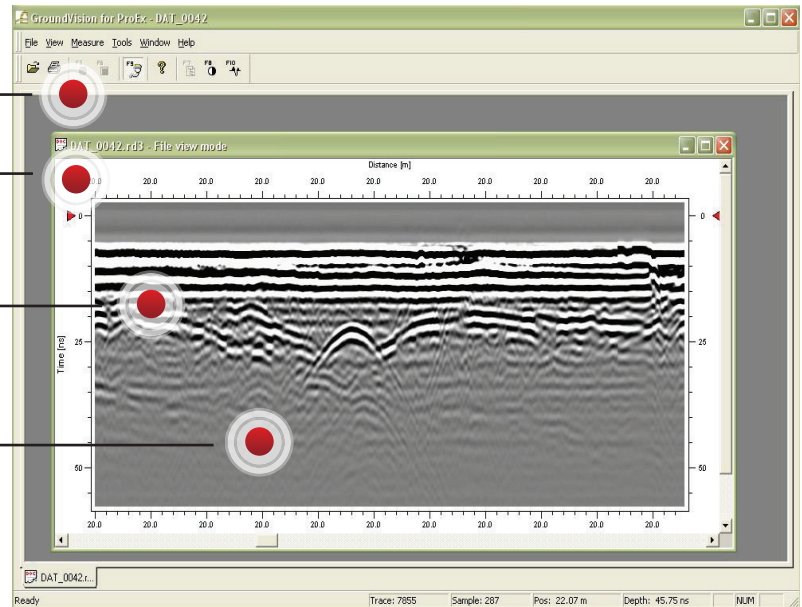
2. Printing Options



3. Easy-to-use Interface



4. Filter Options



MALÅ GroundVision™

MALÅ GroundVision™ software is a data acquisition software designed by MALÅ Geoscience dedicated to MALÅ GPR Systems in single or multi-channel mode. The software is available as MALÅ GroundVision and MALÅ GroundVision 2.

MALÅ GroundVision is the first version designed for the MALÅ RAMAC/GPR parallelport communication units; MALÅ CUII and MALÅ X3M and offers an easy-to-use interface, file management, printing and other key features such as GPS compatibility.

GroundVision 2 is the latest version optimized and designed for the new MALÅ Geoscience platform of units; MALÅ ProEx (Professional Explorer Unit) and MALÅ X3M both with Ethernet communication.

Each measurement and its associated settings are stored in files. MALÅ GroundVision and MALÅ GroundVision 2 provide the option of filtering the data during data acquisition and also afterwards during post-processing. The software supports both GPS logging and multiple markers during measurement. All radargrams can be printed as such, or post processed by further software.

Corporate Headquarters Offices

MALÅ Geoscience
Skolgatan 11, SE-930 70
Malå, Sweden
Phone: +46 953 345 50
Fax: +46 953 345 67
E-mail: sales@malags.com

USA: MALÅ Geoscience USA, Inc., 465 Deanna Lane, Charleston, SC 29492
Phone: +1 843 852 5021, Fax: +1 843 284 0684, E-mail: sales.usa@malags.com

China: MALÅ Geoscience (China), Room 2604, Yuan Chen Xin BLDG, No.12 Yu Min Road Chao Yang District, Beijing 100029
Phone: +86 108 225 0728, Fax: +86 108 225 0815, E-mail: sales@malags.com