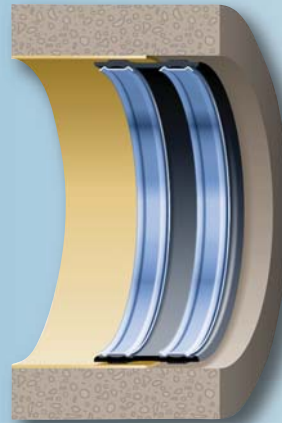
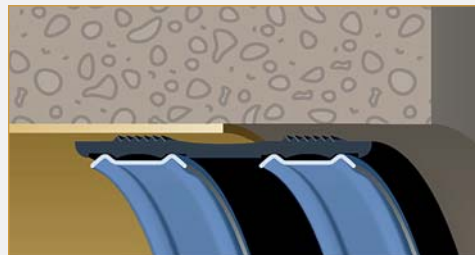


# Drain Liner End Seal

**Prevents infiltration  
between Liner and  
Host Pipe**



**In the event that the section of host and renewed pipe adjacent to the manhole is not fully lined or cannot be completely sealed the epros® DrainLinerEndSeal is an appropriate solution. It assures the end of the liner is fully sealed and will not allow infiltration/exfiltration or root intrusion into the pipe at the sealed end.**



- Manufactured from EPDM Rubber and Stainless Steel to withstand the harsh sanitary sewer environment.
- Complies with material property requirements of ASTM C923
- Quick and easy to install
- Eliminates Infiltration/Exfiltration between the Liner and Host Pipe

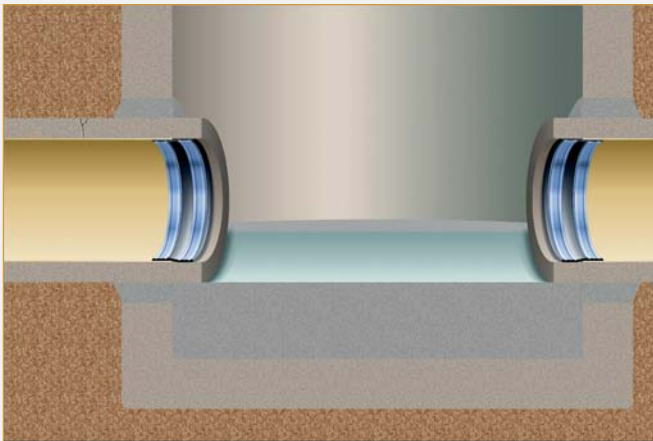
## DRAIN LINER END SEAL

The Drain Liner End Seal utilizes the patented Slotted Band® to provide maximum sealing force with a minimum reduction in pipe diameter. This unique design captures the rubber and compresses it against the host pipe and new CIPP liner creating a permanent mechanical seal.

The patented Slotted Band is constructed from a single piece of Stainless Steel (EN 1.4307) precisely rolled to match the diameter of the CIPP liner. The unique shape of the Slotted Band provides the maximum amount of strength and sealing force with the least possible thickness.



The band is then expanded using a hydraulic expansion tool. As the band expands the integral latching mechanism progresses from slot to slot, positively locking on each one until the next one is reached. There is an audible click created by the spring/rubber interaction as the band is expanded into place.



Covered under U.S. Patent No. 6,953,194 & 7,243,956 B2



[WWW.TRELLEBORG.COM/PIPE-SEALS](http://WWW.TRELLEBORG.COM/PIPE-SEALS)